

# BlueEva+S/ADC Evaluation Kit User Guide

1VV0301284 Rev. 04 – 2016-09-29



## APPLICABILITY TABLE

PRODUCT
BlueEva+S/ADC



*SPECIFICATIONS SUBJECT TO CHANGE WITHOUT NOTICE*

**Notice**

While reasonable efforts have been made to assure the accuracy of this document, Telit assumes no liability resulting from any inaccuracies or omissions in this document, or from use of the information obtained herein. The information in this document has been carefully checked and is believed to be entirely reliable. However, no responsibility is assumed for inaccuracies or omissions. Telit reserves the right to make changes to any products described herein and reserves the right to revise this document and to make changes from time to time in content hereof with no obligation to notify any person of revisions or changes. Telit does not assume any liability arising out of the application or use of any product, software, or circuit described herein; neither does it convey license under its patent rights or the rights of others.

It is possible that this publication may contain references to, or information about Telit products (machines and programs), programming, or services that are not announced in your country. Such references or information must not be construed to mean that Telit intends to announce such Telit products, programming, or services in your country.

**Copyrights**

This instruction manual and the Telit products described in this instruction manual may be, include or describe copyrighted Telit material, such as computer programs stored in semiconductor memories or other media. Laws in the Italy and other countries preserve for Telit and its licensors certain exclusive rights for copyrighted material, including the exclusive right to copy, reproduce in any form, distribute and make derivative works of the copyrighted material. Accordingly, any copyrighted material of Telit and its licensors contained herein or in the Telit products described in this instruction manual may not be copied, reproduced, distributed, merged or modified in any manner without the express written permission of Telit. Furthermore, the purchase of Telit products shall not be deemed to grant either directly or by implication, estoppel, or otherwise, any license under the copyrights, patents or patent applications of Telit, as arises by operation of law in the sale of a product.

**Computer Software Copyrights**

The Telit and 3rd Party supplied Software (SW) products described in this instruction manual may include copyrighted Telit and other 3rd Party supplied computer programs stored in semiconductor memories or other media. Laws in the Italy and other countries preserve for Telit and other 3rd Party supplied SW certain exclusive rights for copyrighted computer programs, including the exclusive right to copy or reproduce in any form the copyrighted computer program. Accordingly, any copyrighted Telit or other 3rd Party supplied SW computer programs contained in the Telit products described in this instruction manual may not be copied (reverse engineered) or reproduced in any manner without the express written permission of Telit or the 3rd Party SW supplier. Furthermore, the purchase of Telit products shall not be deemed to grant either directly or by implication, estoppel, or otherwise, any license under the copyrights, patents or patent applications of Telit or other 3rd Party supplied SW, except for the normal non-exclusive, royalty free license to use that arises by operation of law in the sale of a product.



## Usage and Disclosure Restrictions

### License Agreements

The software described in this document is the property of Telit and its licensors. It is furnished by express license agreement only and may be used only in accordance with the terms of such an agreement.

### Copyrighted Materials

Software and documentation are copyrighted materials. Making unauthorized copies is prohibited by law. No part of the software or documentation may be reproduced, transmitted, transcribed, stored in a retrieval system, or translated into any language or computer language, in any form or by any means, without prior written permission of Telit

### High Risk Materials

Components, units, or third-party products used in the product described herein are NOT fault-tolerant and are NOT designed, manufactured, or intended for use as on-line control equipment in the following hazardous environments requiring fail-safe controls: the operation of Nuclear Facilities, Aircraft Navigation or Aircraft Communication Systems, Air Traffic Control, Life Support, or Weapons Systems (High Risk Activities"). Telit and its supplier(s) specifically disclaim any expressed or implied warranty of fitness for such High Risk Activities.

### Trademarks

TELIT and the Stylized T Logo are registered in Trademark Office. All other product or service names are the property of their respective owners.

### Third Party Rights

The software may include Third Party Right software. In this case you agree to comply with all terms and conditions imposed on you in respect of such separate software. In addition to Third Party Terms, the disclaimer of warranty and limitation of liability provisions in this License shall apply to the Third Party Right software.

TELIT HEREBY DISCLAIMS ANY AND ALL WARRANTIES EXPRESS OR IMPLIED FROM ANY THIRD PARTIES REGARDING ANY SEPARATE FILES, ANY THIRD PARTY MATERIALS INCLUDED IN THE SOFTWARE, ANY THIRD PARTY MATERIALS FROM WHICH THE SOFTWARE IS DERIVED (COLLECTIVELY "OTHER CODE"), AND THE USE OF ANY OR ALL THE OTHER CODE IN CONNECTION WITH THE SOFTWARE, INCLUDING (WITHOUT LIMITATION) ANY WARRANTIES OF SATISFACTORY QUALITY OR FITNESS FOR A PARTICULAR PURPOSE.

NO THIRD PARTY LICENSORS OF OTHER CODE SHALL HAVE ANY LIABILITY FOR ANY DIRECT, INDIRECT, INCIDENTAL, SPECIAL, EXEMPLARY, OR CONSEQUENTIAL DAMAGES (INCLUDING WITHOUT LIMITATION LOST PROFITS), HOWEVER CAUSED AND WHETHER MADE UNDER CONTRACT, TORT OR OTHER LEGAL THEORY, ARISING IN ANY WAY OUT OF THE USE OR DISTRIBUTION OF THE OTHER CODE OR THE EXERCISE OF ANY RIGHTS GRANTED UNDER EITHER OR BOTH THIS LICENSE AND THE LEGAL TERMS APPLICABLE TO ANY SEPARATE FILES, EVEN IF ADVISED OF THE POSSIBILITY OF SUCH DAMAGES.

Copyright © Telit Communications S.p.A. 2016.



## Contents

<b>1. Introduction.....</b>	<b>7</b>
1.1. Scope.....	7
1.2. Audience .....	7
1.3. Contact Information, Support .....	7
1.4. Text Conventions .....	8
1.5. Related Documents.....	8
<b>2. Package Content .....</b>	<b>9</b>
<b>3. Hardware Version Information .....</b>	<b>10</b>
<b>4. Hardware .....</b>	<b>11</b>
4.1. BlueMod+S .....	11
4.2. Reset.....	11
4.3. USB Interface.....	11
4.4. LEDs .....	12
4.5. External Low Power Oscillator .....	12
4.6. Connectors / Jumpers .....	12
4.6.1. Jumper J2.....	12
4.6.2. Jumper J3.....	12
4.6.3. Jumper J4.....	13
4.6.4. Connector X2.....	13
4.6.5. Connector X3.....	14
4.6.6. Connector X4.....	15
4.7. Current Measurement .....	15
4.8. Power Supply .....	15
4.8.1. USB Power Supply .....	15
4.8.2. External Power Supply.....	15
4.8.3. Battery Holder.....	15
4.9. Buzzer .....	15
4.10. Push Button .....	15
4.11. How To Interface the UART Lines on TTL level.....	16
4.12. Default Configuration .....	17
4.13. ADC Extension Board .....	18
4.13.1. Connector X1 .....	18





4.13.2.	Connector X2 .....	18
4.13.3.	DIO Buttons.....	18
4.13.4.	ADC Controller .....	18
4.13.5.	Connector X4 .....	19
4.13.6.	LEDs .....	19
<b>5.</b>	<b>Setup.....</b>	<b>20</b>
5.1.	System Requirements .....	20
5.2.	Startup.....	20
5.3.	Installation of the BlueEva+S/ADC USB Driver .....	20
<b>6.</b>	<b>ADC Utility PC Client / ADC Utility iOS Client .....</b>	<b>21</b>
6.1.	ADC Utility iOS Client.....	21
6.2.	ADC Utility PC Client.....	21
6.2.1.	Installation of the BlueEva+S/Central USB Driver .....	22
6.3.	ADC Utility Client: Starting the ADC Utility Client .....	23
6.4.	ADC Utility Client: Connect to a ADC Device .....	24
6.5.	ADC Utility Client: Signal Status Screen / Configure Device Screen.....	25
6.6.	ADC Utility Client: Logging Screen.....	26
6.7.	ADC Utility Client: Hands on - Alarm System Examples .....	27
<b>7.</b>	<b>Usage of the BlueEva+S/ADC.....</b>	<b>28</b>
7.1.	Configuration of the BlueEva+S/ADC.....	28
7.1.1.	UART Mode .....	28
7.1.2.	SCIS Mode .....	30
7.2.	Examples to Use Digital and Analogue Signals .....	31
7.2.1.	Digital IO Signal (Output) .....	31
7.2.2.	Digital IO Signal (Input) .....	32
7.2.3.	Analogue Signal (Input) .....	32
<b>8.</b>	<b>Firmware Update .....</b>	<b>33</b>
8.1.	Serial Firmware Upgrade (UART) .....	33
8.2.	Firmware Update Over The Air (OTA).....	35
8.3.	Firmware Update Over The Air using Nordic nRF Toolbox on Android .....	35
<b>9.</b>	<b>Document History.....</b>	<b>39</b>



# 1. Introduction

## 1.1. Scope

This document describes the usage of the evaluation kit for the Bluetooth module BlueMod+S/ADC.

## 1.2. Audience

This document is intended for Telit customers, especially system integrators, about to implement Bluetooth modules in their application.

## 1.3. Contact Information, Support

For general contact, technical support, to report documentation errors and to order manuals, contact Telit Technical Support Center (TTSC) at:

[TS-SRD@telit.com](mailto:TS-SRD@telit.com)

Alternatively, use:

<http://www.telit.com/support>

For detailed information about where you can buy the Telit modules or for recommendations on accessories and components visit:

<http://www.telit.com>

To register for product news and announcements or for product questions contact Telit Technical Support Center (TTSC).

Our aim is to make this guide as helpful as possible. Keep us informed of your comments and suggestions for improvements.

Telit appreciates feedback from the users of our information.



## 1.4. Text Conventions



**Danger – This information *MUST* be followed or catastrophic equipment failure or bodily injury may occur.**



***Caution or Warning – Alerts the user to important points about integrating the module, if these points are not followed, the module and end user equipment may fail or malfunction.***



**Tip or Information – Provides advice and suggestions that may be useful when integrating the module.**

All dates are in ISO 8601 format, i.e. YYYY-MM-DD.

## 1.5. Related Documents

- [1] BlueMod+S/ADC AT Command Reference, 80507ST10755A
- [2] BlueMod+S Hardware Reference, 1VV0301275
- [3] BlueMod+S Test Mode Reference
- [4] BlueEva+S Schematic





## 2. Package Content

The BlueEva+S/ADC package contains the following components:

- 1 x BlueEva+S board
- 1 x ADC Extension Board
- 1 x Mini USB cable
- 1 x Battery CR2032
- 1 x Printed card with download instructions



### 3. Hardware Version Information

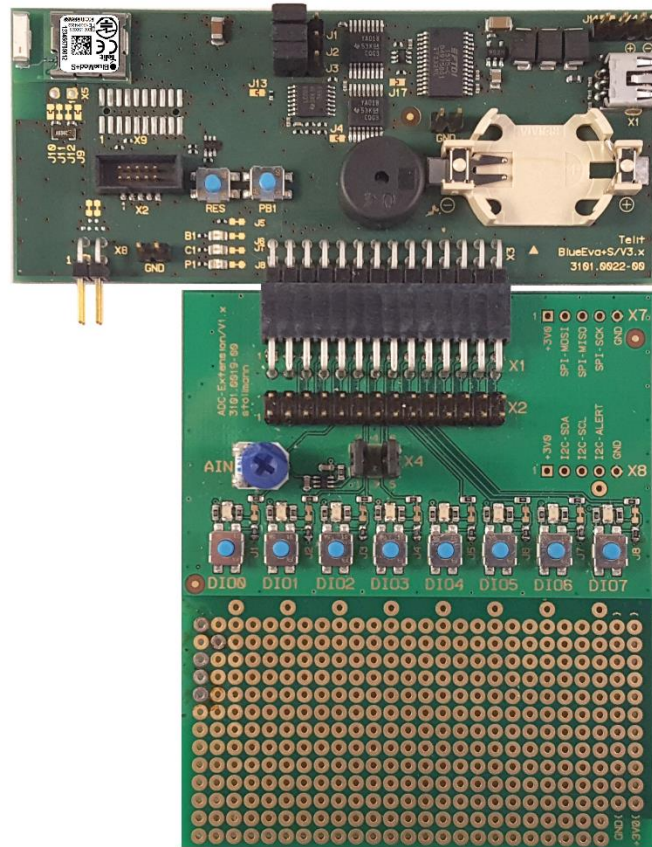


Figure 1 BlueEva+S board V3 + ADC extension board V1



## 4. Hardware

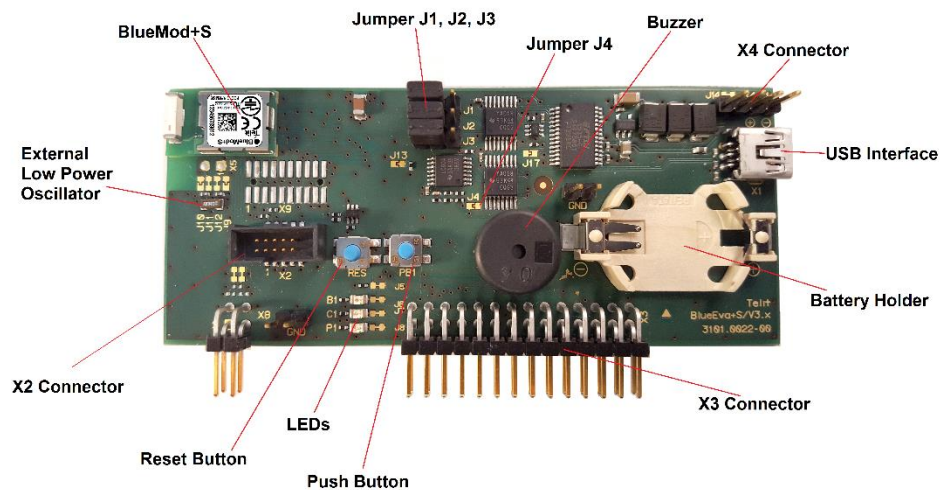


Figure 2 BlueEva+S

### 4.1. BlueMod+S

The BlueEva+S/ADC is equipped with a BlueMod+S Bluetooth module.

### 4.2. Reset

The BlueEva+S is equipped with a reset button. Pressing the reset button will trigger the BlueMod+S module to perform a reset. The USB port is not influenced by the reset.

### 4.3. USB Interface

The BlueEva+S provides an USB interface which is used to connect the evaluation board to the host and as power supply.

The USB interface is equipped with an FTDI USB to serial bridge, interfacing the serial port of the BlueMod+S.

The serial port is a high-speed UART interface at CMOS levels and supports the following features:

- Transmission speed: 9,600 – 921,600 bps (asynchronous)
- Character representation: 8 bit, no parity, 1 stop bit (8N1)
- Hardware flow-control with RTS/CTS (active low)

For details please refer to the *BlueMod+S Hardware Reference*.





## 4.4. LEDs

The BlueEva+S provides several LEDs for functional indication.

Interface	Position	Function
LEDs	P1	Indicates the presence of power supply voltage
	B1	Connected to GPIO[3] <sup>(1)</sup>
	C1	Connected to GPIO[2] <sup>(1)</sup>

<sup>(1)</sup> Function depending on firmware support

## 4.5. External Low Power Oscillator

The BlueEva+S provides an external low power crystal. This is connected to the BlueMod+S by default. For using alternatively low power oscillator sources refer to the schematics and the *BlueMod+S Hardware Reference*.

## 4.6. Connectors / Jumpers

### 4.6.1. Jumper J2

Jumper J2 provides the possibility to invoke the bootloader at start-up. This is required for firmware update.

Jumper Number	Position	Function
J2	1-2	Normal operation mode at start-up
J2	2-3	Invoke bootloader at start-up (BOOT0)

### 4.6.2. Jumper J3

Jumper J3 is used for either hangup or UICP functionality.

In hangup mode DTR# is connected to GPIO[4]. An existing connection is terminated by DTR drop (high signal on DTR#).

In UICP mode DTR# is used as IUR-IN# signal. UICP is an advanced power management protocol. For further information about UICP please refer to the *UICP UART Interface Control Protocol Specification*.

Jumper Number	Position	Function
J3	1-2	DTR# connected to IUR-IN# for using UICP
J3	2-3	DTR# connected to GPIO[4]



### **4.6.3. Jumper J4**

Jumper J4 provides the possibility to disable (by closing it with a soldering point) the USB to serial bridge. With a closed jumper J4, the in- and outputs of the FTDI chip are disconnected. Therefore the modules serial port can be controlled via Connector X3 (see chapter 4.6.5).

When using BlueEva+S, be sure to connect a serial interface via connector X3 only when jumper J4 is closed. Otherwise the serial interface and the USB to serial bridge will collide.

### **4.6.4. Connector X2**

Connector X2 is used as “Debug in” to connect a debugger to the BlueMod+S module.



#### 4.6.5. Connector X3

Connector X3 is a 28 pin extension header exposing all module signals.

Pin Number	Signal	Type	Description
1	+3V0	PWR	Supply voltage output
2	+3V0	PWR	Supply voltage output
3	GND	PWR	Ground
4	GND	PWR	Ground
5	GPIO[0]	I	GPIO
6	GPIO[1]	I	GPIO
7	GPIO[2]	I/O	LED C1, user IO
8	GPIO[3]	I/O	LED B1, user IO
9	GPIO[4]	I-PD	HANGUP
10	GPIO[5]	I/O	IOD, user IO
11	GPIO[6]	I-DIS	GPIO
12	GPIO[7]	I-DIS	GPIO
13	GPIO[8]	I/O	IOA, user IO
14	GPIO[9]	I-DIS	Leave open <sup>(1)</sup>
15	GPIO[10]	I-DIS	Leave open <sup>(1)</sup>
16	GPIO[11]	I-DIS	Leave open <sup>(1)</sup>
17	GPIO[12]	I-DIS	Leave open <sup>(1)</sup>
18	GPIO[13]	I-DIS	Leave open <sup>(1)</sup>
19	GPIO[14]	I-DIS	Leave open <sup>(1)</sup>
20	PO26_AIN0		See schematic <sup>(1)</sup>
21	PO27_AIN1		See schematic <sup>(1)</sup>
22	EXT-RES#	I-PU	User reset
23	UART-TXD <sup>(2)</sup>	O-PP	IUR data OUT
24	UART-RXD <sup>(2)</sup>	I	IUR data IN
25	UART-CTS# <sup>(2)</sup>	I	Flow control / IUC
26	UART-RTS# <sup>(2)</sup>	O-PP	Flow control / IUC
27	IUR-IN# <sup>(2)</sup>	I	UICP control
28	IUR-OUT# <sup>(2)</sup>	O-PP	UICP control

PU = PullUp, PD = PullDown, PP = PushPull, I-DIS = InputBufferDisconnected

<sup>(1)</sup> Function depending on firmware support

<sup>(2)</sup> Disconnected from module, when jumper J4 is open





#### 4.6.6. Connector X4

Connector X4 provides the possibility to measure the supply current of the BlueMod+S and to power the evaluation board with an external power supply.

Pin Number	Signal
1	GND
2	ext. PWR
3	+3V0
4	+3V0-BT

#### 4.7. Current Measurement

Current measurement can be performed by opening (cut off) jumper J14 and measuring the current drawn by BlueMod+S between pin 3 and 4 of connector X4. The currents drawn by other peripherals on BlueEva+S are not included in this measurement.

For measuring the minimum current, the serial interface must be disconnected from the module. This can be achieved by disconnecting the USB plug and powering the board via external or battery supply or by closing solder jumper J4.

#### 4.8. Power Supply

The three power sources are decoupled from each other by diodes connected in series. The presence of the supply voltage is indicated by LED P1.

##### 4.8.1. USB Power Supply

$V_{BUS}$  of the USB connector X1 directly powers the USB to serial converter and via a voltage regulator the rest of the circuitry.

##### 4.8.2. External Power Supply

Pin 1 and 2 of connector X4 provides the possibility to connect an external power supply (see *BlueMod+S Hardware Reference*).

##### 4.8.3. Battery Holder

The battery holder provides the possibility to run the BlueEva+S without external power (via USB or external power supply) by using a 3V coin cell battery CR2032. Opening jumper J8 will disconnect the power LED P1 and thus save 1.8mA of battery current. For safety reasons there should be permanently connected no other power supply, when a battery is inserted.

#### 4.9. Buzzer

The Buzzer can be used to generate alarm and other audible signals.

#### 4.10. Push Button

The Push Button can be used as input for human interaction.



## 4.11. How To Interface the UART Lines on TTL level



If you want to access the UART lines directly it is important to disable the onboard USB to serial bridge by closing jumper J4 with a soldering point.

All UART signals are available at connector X3 and can be connected to your application.

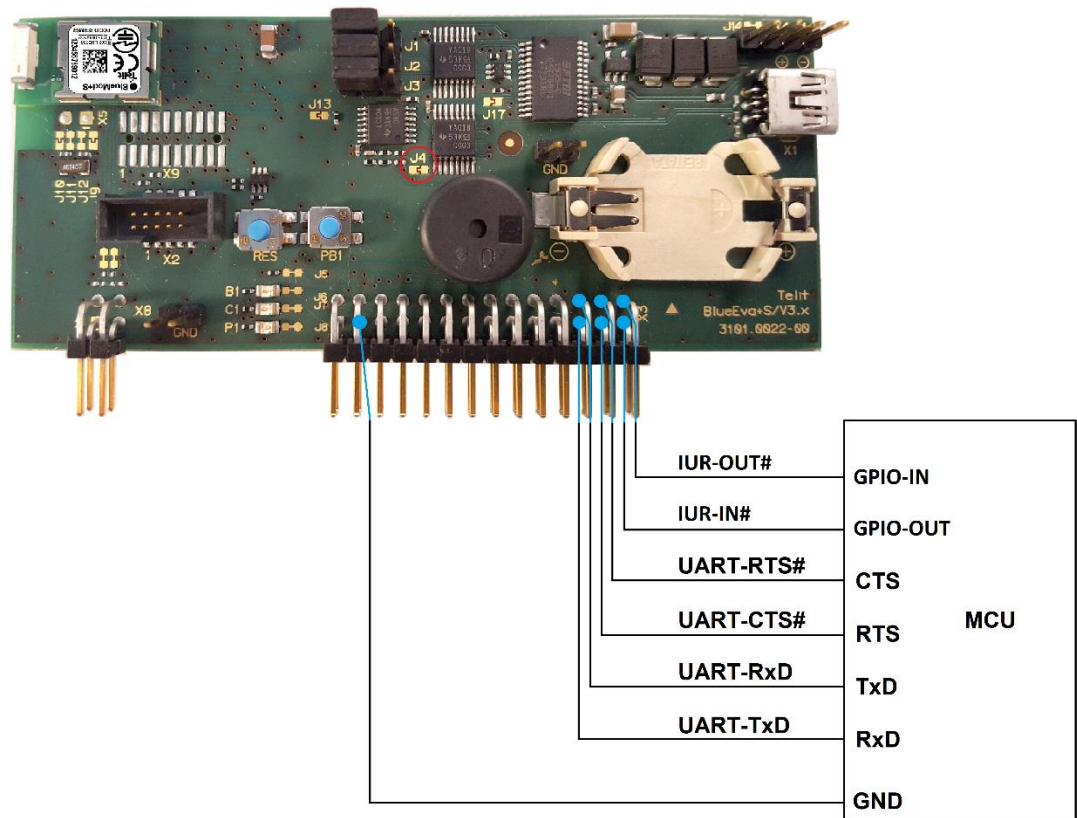


Figure 3: MCU connected to UART lines

## 4.12. Default Configuration

The BlueEva+S/ADC is preconfigured as described below:

Jumper Number	Position	Function
J1	1-2	Normal operation mode at start-up
J2	1-2	Normal operation mode at start-up
J3	1-2	DTR# connected to IUR-IN# for using UICP

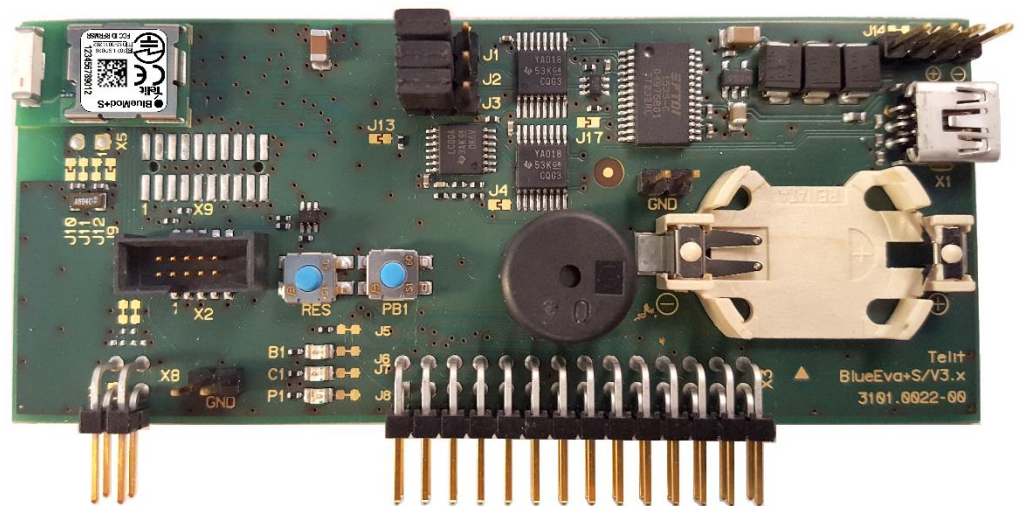
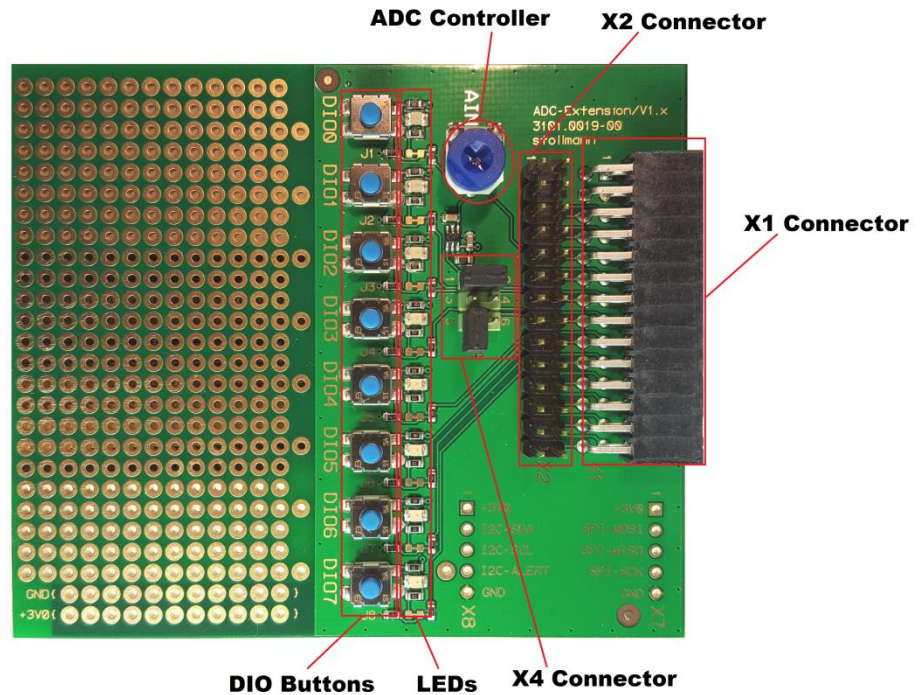


Figure 4: BlueEva+S/ADC default configuration





## 4.13. ADC Extension Board



### 4.13.1. Connector X1

Connector X1 is the counterpart to the connector X3 (see also chapter 4.6.5) from the BlueEva+S board.

### 4.13.2. Connector X2

With the help of this connector it is possible to apply DIO/ADC signals. This connector is connected in parallel to the X1 connector.

### 4.13.3. DIO Buttons


The DIO buttons can be used on condition that the GPIOs are configured as input.

### 4.13.4. ADC Controller

The ADC controller can be used on condition that the pins 1-2 of interface X4 are bridged. The ADC controller allows generating a voltage in the range of about 0V – 3V for the ADC analog Input on the Module.



#### 4.13.5. Connector X4

Pin Number	Signal	Description
1-2	ADC analog input	If these pins are bridged (e.g. with a jumper) this will enable the signal input from the ADC controller.
3-4	CNF_RES#	If the CNF_RES# signal is active (pins 3-4 are bridged for at least 1000ms) some parameter of the BlueEva+S/ADC will be set to default to ensure that the BlueMod+S/ADC is reachable/connectable again in case of misconfiguration.
5-6	OTA-CMD-EN#	<p>If these pins are bridged (e.g. with a jumper) this will enable the SCIS mode (in this case the UART mode is disabled).</p> <p>If these pins are not bridged this will enable the UART mode (in this case the SCIS mode is disabled).</p> <p> <b>Note: A hardware reset is necessary after changing the SCIS/UART mode.</b></p>

#### 4.13.6. LEDs

If some of the GPIO signals from the BlueEva+S/ADC are configured as output then the corresponding LEDs can be used to monitor the output DIO signals.

If some of the GPIO signals from the BlueEva+S/ADC are configured as input then the corresponding LED will shine as long as the button is pressed.



## 5. Setup

### 5.1. System Requirements

- PC with Windows® XP or higher
- 1 free USB port
- Adobe Acrobat® Reader for reading the documentation

### 5.2. Startup

To install the BlueEva+S/ADC connect it as follows.

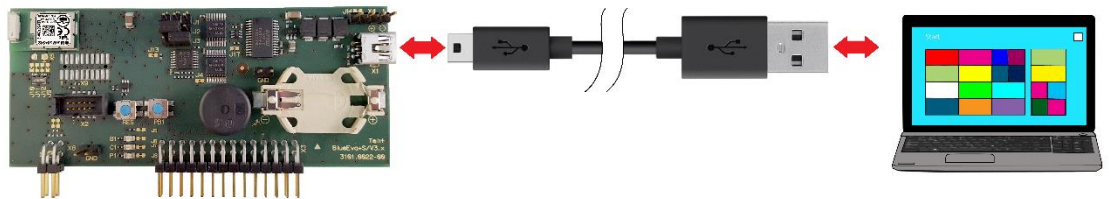


Figure 5 Connect the BlueEva+S/ADC to your PC

### 5.3. Installation of the BlueEva+S/ADC USB Driver

If required download the latest FTDI VCP USB to UART driver from:  
<http://www.ftdichip.com/Drivers/VCP.htm>

Connect the BlueEva+S/ADC to a free USB port of a PC and install the USB device drivers by following the instructions of the Windows® Hardware Wizard using the downloaded FTDI VCP USB to UART driver.

The USB connection is used for power supply and for UART communication to a PC over a virtual COM port. This lets you use a terminal emulation program to perform the configuration or to control the Bluetooth connection.

You may download the TeraTerm terminal program from the official open source web site:  
<https://en.osdn.jp/projects/tssh2/releases/>





## 6. ADC Utility PC Client / ADC Utility iOS Client

Telit provides two software clients to be able to connect and configure the BlueEva+S/ADC. Both versions are made for test purposes and have the same look and feel and the same feature set.

### 6.1. ADC Utility iOS Client

The ADC Utility iOS client is an iOS based software client and can be downloaded from the App Store for free:

<https://itunes.apple.com/us/app/adc-utility/id1068531858?mt=8>



The ADC Utility iOS client uses the Bluetooth stack from the iPhone and is after the software is successfully installed therefore ready to use.

### 6.2. ADC Utility PC Client

The ADC Utility PC Client is a free Windows based software client which needs additionally a BlueEva+S/Central device to connect to the BlueEva+S/ADC device.

The BlueEva+S/Central device is not part of this package and must be purchased additionally. Please contact us on how to purchase the BlueEva+S/Central (Part number: 53342-xx) including the ADC Utility PC Client Software: e-mail: ts-srd@telit.com

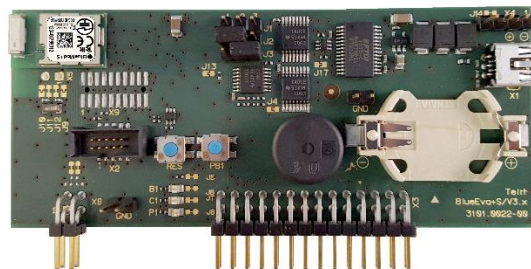


Figure 6 BlueEva+S/Central



### 6.2.1. Installation of the BlueEva+S/Central USB Driver

The ADC Utility PC Client needs a BlueEva+S/Central (see chapter 6.2).

Connect the BlueEva+S/Central to a free USB port of a PC and install the USB device drivers by following the instructions of the Windows® Hardware Wizard using the downloaded FTDI VCP USB to UART driver.

If required download the latest FTDI VCP USB to UART driver from:  
<http://www.ftdichip.com/Drivers/VCP.htm>

The USB connection is used for power supply and for UART communication to a PC over a virtual COM port.



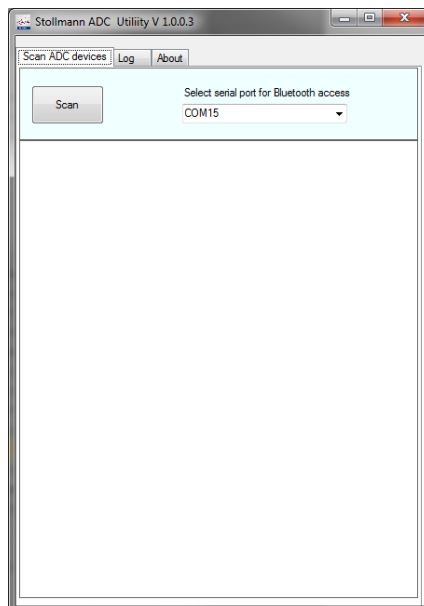
**Please refer to the device manager to figure out which virtual COM port is used for the BlueEva+S/Central hardware.**



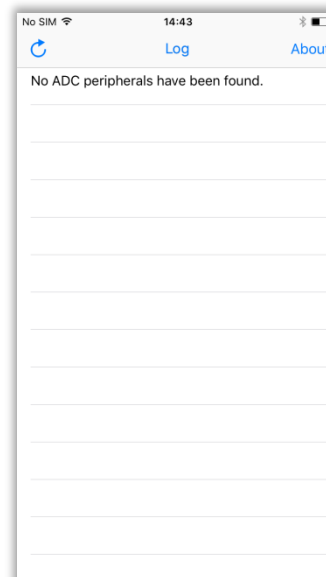
## 6.3. ADC Utility Client: Starting the ADC Utility Client

The ADC iOS Client can be download and installed from App Store whereas the ADC PC Client must be copied respectively unzipped to a directory of your choice on your PC. Execute “adcUI.exe” while the BlueEva+S/Central is connected to your PC.

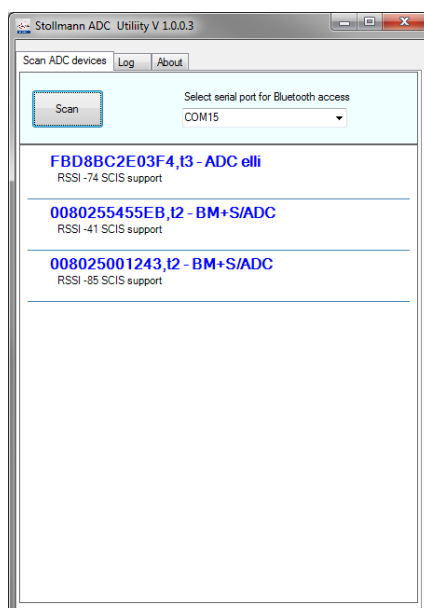
Regarding ADC PC Client: After application starts choose the COM port where the BlueEva+S/Central is connected to. The “Scan” button should be now selectable and a scan can be initiated. If the proper COM port could not be open then an error message will appear (e.g. “Adapter plugged in on COMxx does not response”).



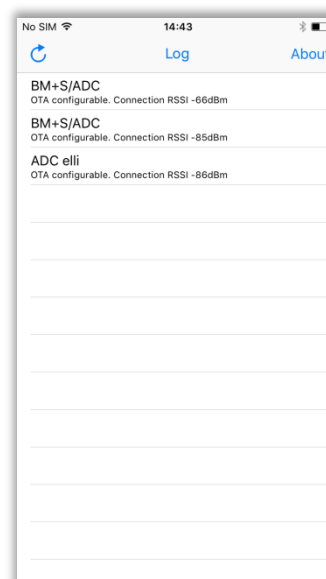
PC Client: Application start



iOS Client: Application start



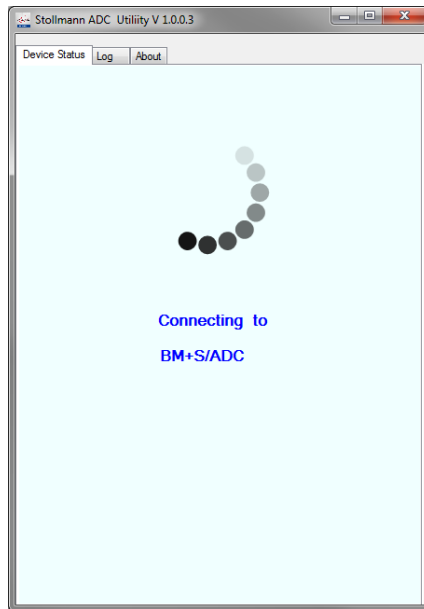
PC Client: Scan results



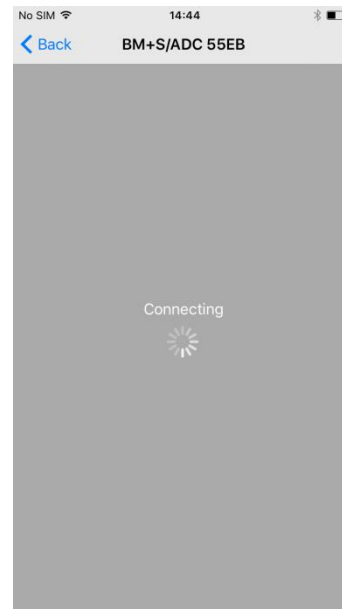
iOS Client: Scan results

## 6.4. ADC Utility Client: Connect to a ADC Device

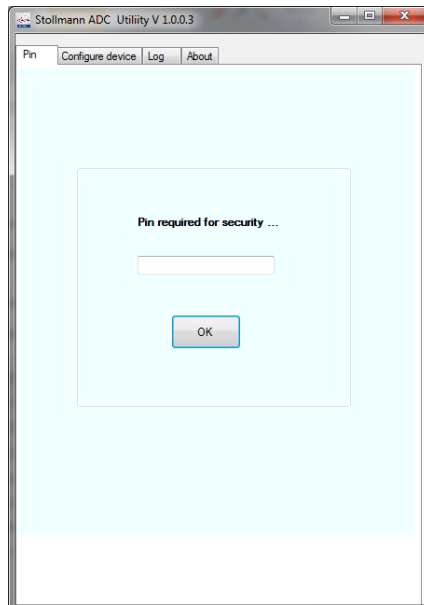
Double click (PC Client) or touch (iOS Client) on an ADC device will initiate a connection. If the ADC device is configured with security (please refer to the ADC AT commands “AT+SECAIOS” / “AT+SECSCIS”) it may happen that a security message appears during the connection setup or configure device screen access.



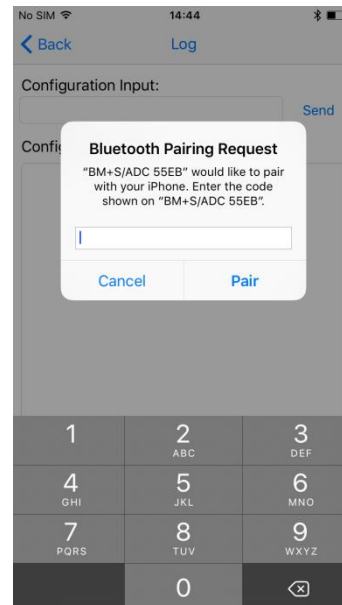
*PC Client:  
Connecting to a ADC device*



*iOS Client:  
Connecting to a ADC device*



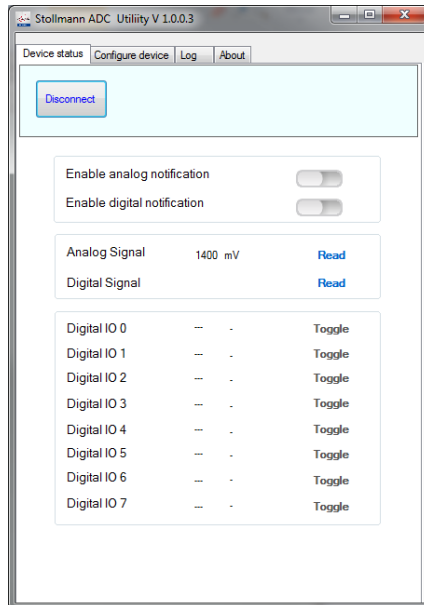
*PC Client:  
Security / PIN request*



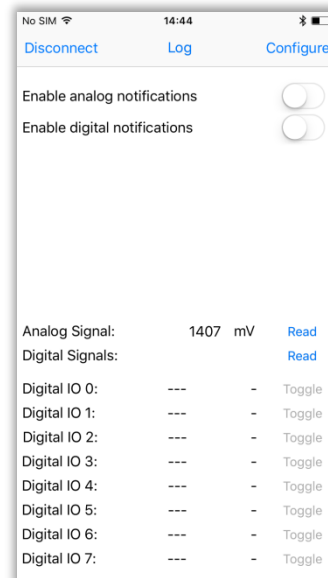
*iOS Client:  
Security / PIN request*

## 6.5. ADC Utility Client: Signal Status Screen / Configure Device Screen

After successful connection the device status will be shown. The device status shows the states regarding the digital IO and analogue signals. Reading a digital or analogue state can be executed manually. Furthermore the digital and/or analogue notifications can be enabled or disabled.

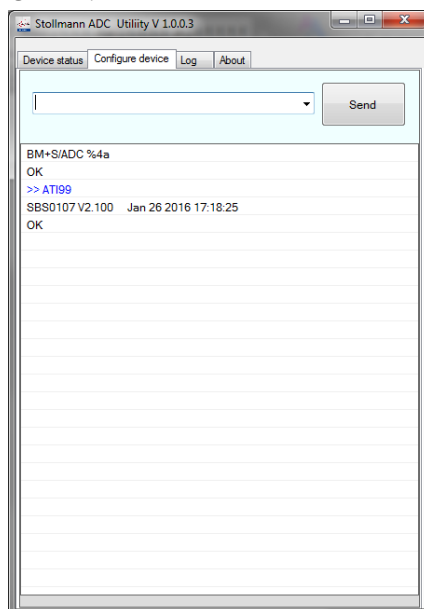


PC Client: Device status

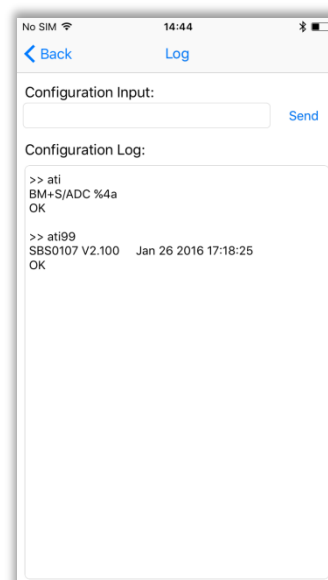


iOS Client: Device status

If the SCIS mode is enabled on the BlueEva+S/ADC device it is possible to send AT commands to the BlueMod+S/ADC via SCIS interface (via air). The SCIS interface allows to configure the BlueMod+S/ADC module over the air without access to the BlueMod+S/ADC UART.



PC Client: Configure device



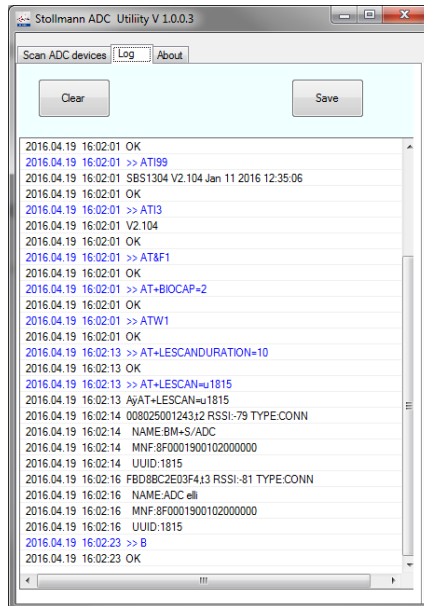
iOS Client: Configure device



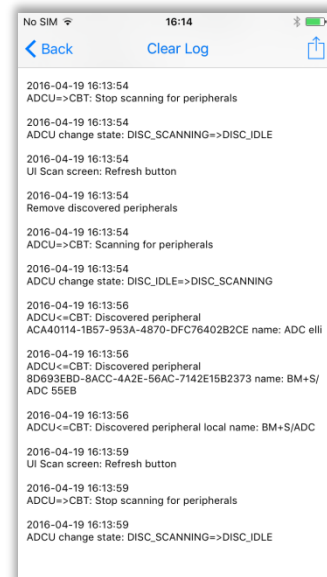
## 6.6. ADC Utility Client: Logging Screen

The PC Client logging screen displays AT commands related information for communication with the BlueEva+S/Central connected to the local UART while the iOS Client displays sent or received related iOS events.

The logging screen can be cleared by using the button “Clear” (PC Client) respectively “Clear log” (iOS Client).



PC Client: Logging screen



iOS Client: Logging screen



## 6.7. ADC Utility Client: Hands on - Alarm System Examples

### 6.7.1.1. Configure State Control

- Configure DIO4 as output to signal App Monitor state  
→ **AT+GPIO=4,dir=o,fbv=0n**  
DIO4 is an output, the initial default signal level is low, the actual signal level will be reset to default in case of an disconnect
- Configure DIO6 as output to control alarm system state  
→ **AT+GPIO=6,dir=o,fbv=0p**  
DIO6 is an output, the initial default signal level is low, the actual signal level will be preserved in case of an disconnect
- Configure DIO7 as input to monitor alarm system state  
→ **AT+GPIO=7,dir=i,pull=n**  
DIO7 is an input, the pull resistors are disabled

Now the alarm system can be armed and its actual state can be read. Alarm system gets App State update in case of disconnect.

### 6.7.1.2. Configure Battery Monitoring

- Define alarm conditions for analog notifications  
→ **AT+ADCTHLD=1000,edge=f**  
Alarm will be triggered if input voltage falls below 1000mV threshold  
→ **AT+ADCSR=100**  
Alarm condition will be checked every 100ms (ADC Sample Rate)
- Enabled analog signal notifications  
→ Switch corresponding application slider to “ON”  
The corresponding GATT CCCD attribute of the AIOS will be set by the Application

Now the alarm system can trigger an low power Application alarm any time when connected



## 7. Usage of the BlueEva+S/ADC

### 7.1. Configuration of the BlueEva+S/ADC

#### 7.1.1. UART Mode



Verify that the UART mode is enabled (see also chapter “4.13.5 Connector X4”).

If the BlueEva+S/ADC is correctly connected to the PC, a terminal emulation program can be used to read and modify the configuration settings.

For a more detailed description of the AT commands used for this purpose, please consult our *BlueMod+S/ADC AT Command Reference*.

As shipped by the factory, the BlueEva+S/ADC works at 115,200 bps, using the 8N1 data format (8 data bits, no parity, 1 stop bit). Please configure your terminal emulation program accordingly. Select the COM port the BlueEva+S/ADC is connected to (COM22 in the example below).

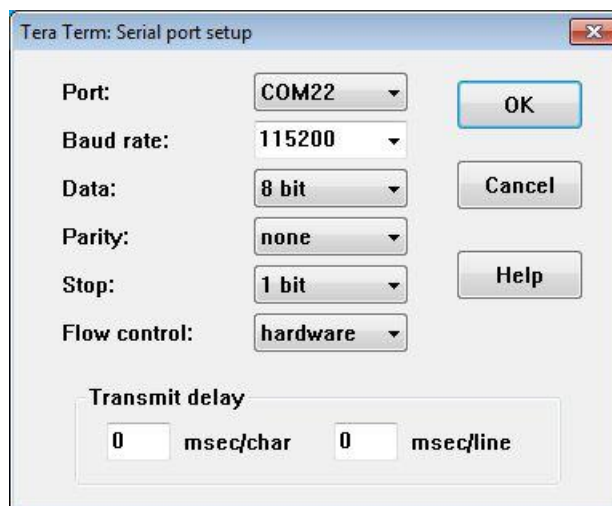


Figure 7: COM port configuration with TeraTerm

Once you have successfully configured the terminal emulation program, issuing the “AT” command without parameters should prompt the BlueEva+S/ADC to return OK.

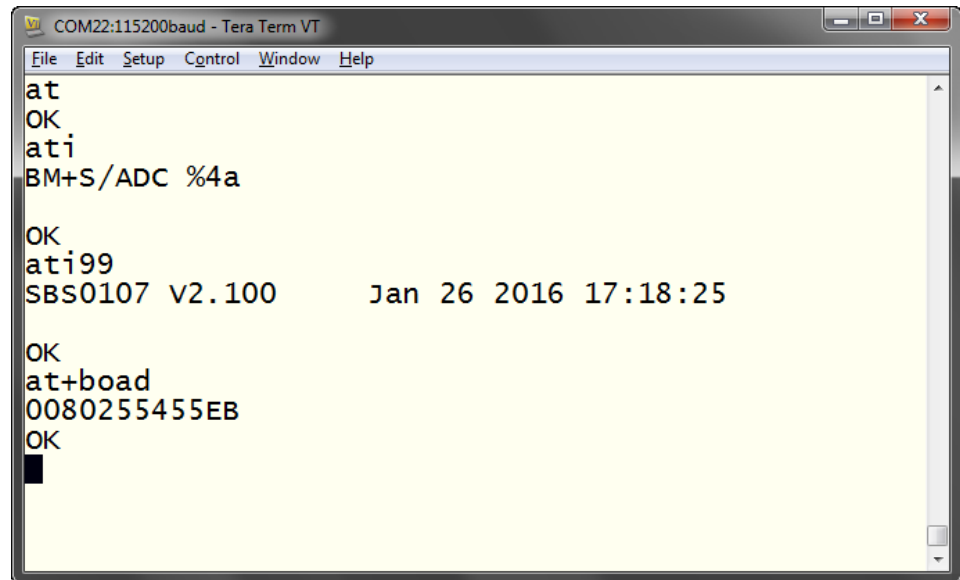
Now you can readout information about the type of the connected device using the “ATI” command.

In the next step, you should issue the “ATI99” command to determine the firmware version installed and check to see whether that is the most recent version.



**BlueEva+S/ADC Evaluation Kit User Guide**  
1VV0301284 Rev. 04 – 2016-09-29

Finally, you should use the “AT+BOAD” command to determine the Bluetooth address of the BlueEva+S/ADC. The Bluetooth address is unique, letting you identify the correct device for each Bluetooth address.



```
COM22:115200baud - Tera Term VT
File Edit Setup Control Window Help
at
OK
ati
BM+S/ADC %4a

OK
ati99
SBS0107 v2.100      Jan 26 2016 17:18:25

OK
at+boad
0080255455EB
OK
█
```

Figure 8: Reading some BlueEva+S/ADC settings with TeraTerm



## 7.1.2. SCIS Mode

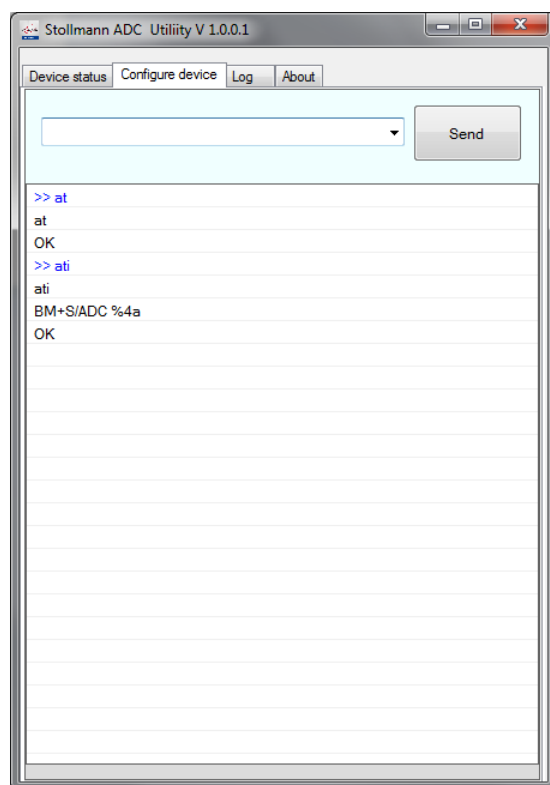


Verify that the UART mode is enabled (see also chapter “4.13.5 Connector X4”).

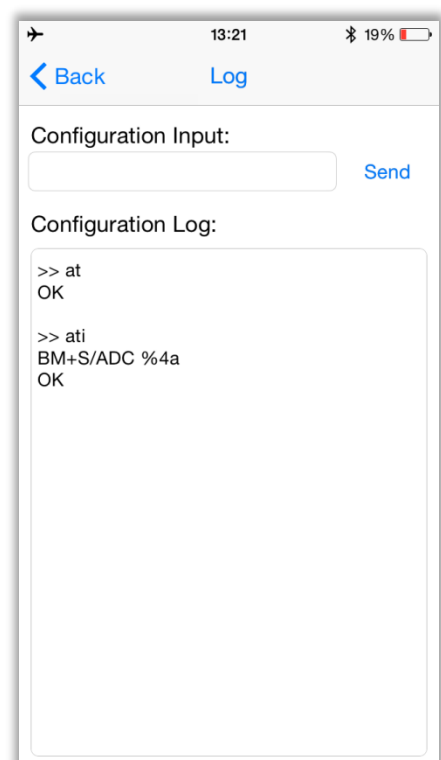
If the SCIS mode is enabled the AT commands can be exchanged over this interface.

Once you have successfully established a connection to the BlueEva+S/ADC device (hereinafter described on the basis of the PC client and iOS client) issuing the “AT” command without parameters via SCIS interface should prompt the BlueEva+S/ADC to return OK.

For a more detailed description of the AT commands used for this purpose, please consult our *BlueMod+S/ADC AT Command Reference*.



Send AT command (PC client)



Send AT command (iOS client)

## 7.2. Examples to Use Digital and Analogue Signals

With AT commands (see also chapter 7.1 and the document *BlueMod+S/ADC AT Command Reference*) it is possible to set different modes of input and/or output signals.



The AT command can be entered either via UART or via SCIS interface. This makes no differences. Use AT+W to save the parameter persistently.

### 7.2.1. Digital IO Signal (Output)

#### Output Example 1:

The following example uses the AT command: **AT+GPIO=0,dir=o,fbv=1n**

*GPIO=0* = Logical number of GPIO  
*dir=o* = Direction of GPIO is output  
*fbv=1n* = [1] Output signal is high, [n] fallback to high if connection is shutdown

Once the AT command has been send successfully the LED on the extension board for DIO0 switches to ON. The signal for the LED can be toggled with the PC client/iOS client (device status) depending on which client is connected. The device status of the PC client/iOS client shows additionally the corresponding signal level regarding DIO0 (Out = 0/1). If the toggle status is 0 and the connection will be disconnected or gets lost for any reason then the LED will become status 1 again because of the setting fbv=1n (fallback to high if the connection is shutdown).

#### Output Example 2:

The following example uses the AT command: **AT+GPIO=1,dir=o,fbv=0n**

*GPIO=1* = Logical number of GPIO  
*dir=o* = Direction of GPIO is output  
*fbv=0n* = [0] Output signal is low, [n] fallback to low if connection is shutdown

Once the AT command has been send successfully the LED on the extension board for DIO1 switches or stays OFF. The signal for the LED can be toggled with the PC client/iOS Client (device status) depending on which client is connected. The device status of the PC client/iOS client shows additionally the corresponding signal level regarding DIO1 (Out = 0/1). If the toggle status is 1 and the connection will be disconnected or gets lost for any reason then the LED will become status 0 again because of the setting fbv=0n (fallback to low if the connection is shutdown).





## 7.2.2. Digital IO Signal (Input)

The following example uses the AT command: **AT+GPIO=2,dir=i,pull=n**

*GPIO=2* = Logical number of GPIO  
*dir=i* = Direction of GPIO is input  
*pull=n* = GPIO has no pull resistor applied (default)

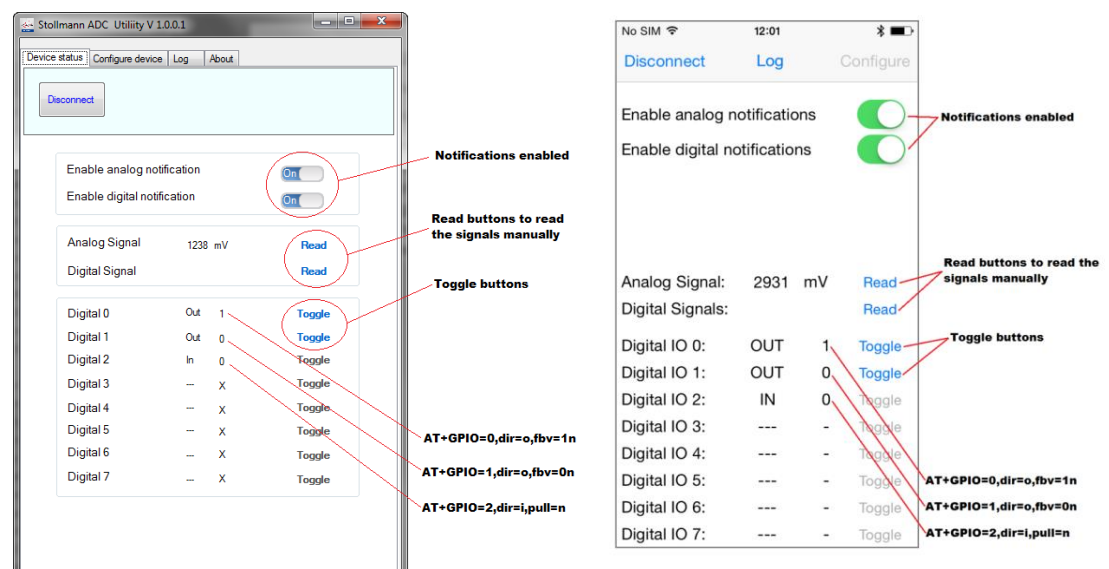
Once the AT command has been send successfully the DIO2 is ready to receive signal changes from the extension board. Press the DIO2 button to toggle between state 0 and 1. The input signal can be displayed with the PC client/iOS client (In = 0/1) by pressing the digital “Read” button manually or alternatively by enabling the digital notifications (DIO2 state will be automatically updated).

## 7.2.3. Analogue Signal (Input)

The following example uses the AT command: **AT+ADCSR=1000**

This command sets the ADC sample rate to 1000 (1000 = 1 sample per second).

Once the AT command has been send successfully the FW is generating analogue to digital (ADC) signals coming from the extension board (ADC controller) on condition that the pins 1-2 on the interface X4 are bridged. The analogue input signal can be displayed with the PC Client/iOS Client by pressing the analogue “Read” button manually or alternatively by enabling the analogue notifications (analogue value will be automatically updated each second).



**PC Interface (Stollmann ADC Utility V 1.0.0.1):**

- Enable analog notification: ☒ (Notifications enabled)
- Enable digital notification: ☒ (Notifications enabled)
- Analog Signal: 1238 mV
- Digital Signal: [Read]
- Digital 0: Out 1 [Read]
- Digital 1: Out 0 [Read]
- Digital 2: In 0 [Read]
- Digital 3: --- X [Read]
- Digital 4: --- X [Read]
- Digital 5: --- X [Read]
- Digital 6: --- X [Read]
- Digital 7: --- X [Read]

**iOS Interface:**

- Enable analog notifications: ☒ (Notifications enabled)
- Enable digital notifications: ☒ (Notifications enabled)
- Analog Signal: 2931 mV [Read]
- Digital Signals: [Read]
- Digital IO 0: OUT 1 [Read]
- Digital IO 1: OUT 0 [Read]
- Digital IO 2: IN 0 [Read]
- Digital IO 3: --- - [Read]
- Digital IO 4: --- - [Read]
- Digital IO 5: --- - [Read]
- Digital IO 6: --- - [Read]
- Digital IO 7: --- - [Read]

**Annotations:**

- Notifications enabled
- Read buttons to read the signals manually
- Toggle buttons
- AT+GPIO=0,dir=o,fbv=1n
- AT+GPIO=1,dir=o,fbv=0n
- AT+GPIO=2,dir=i,pull=n



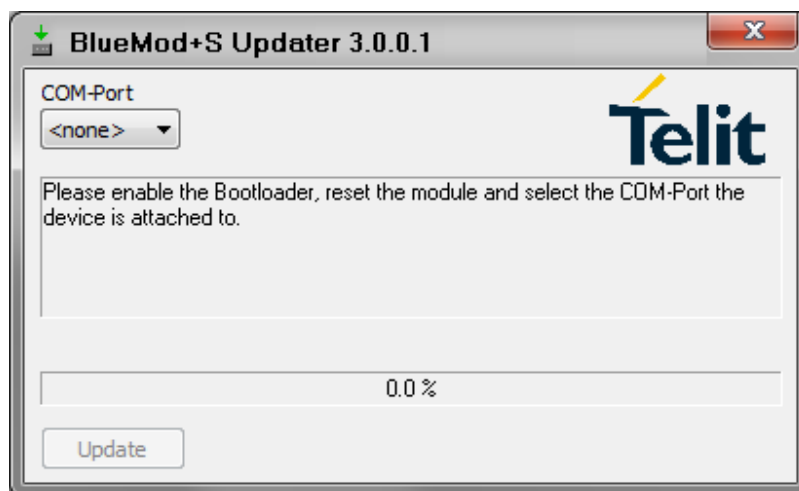
## 8. Firmware Update

### 8.1. Serial Firmware Upgrade (UART)

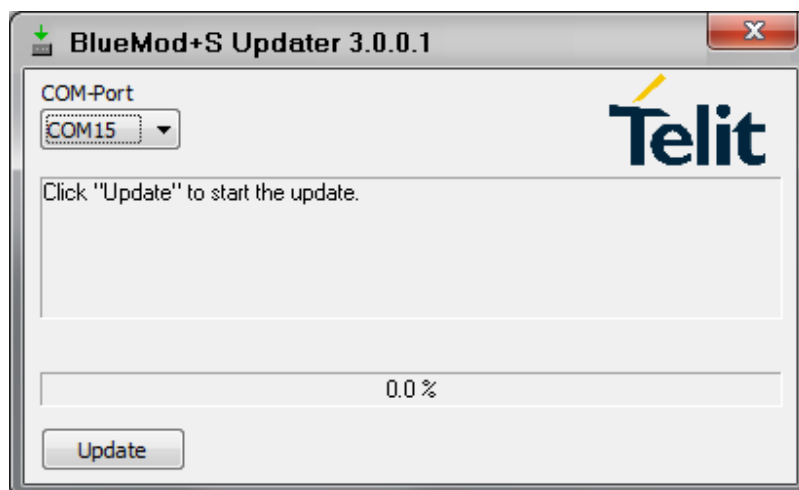
The firmware of the BlueEva+S/ADC can be updated by using the BlueMod+S Updater. The file name of the executable program consists of version and patch information.

Please follow the instructions below for updating the firmware:

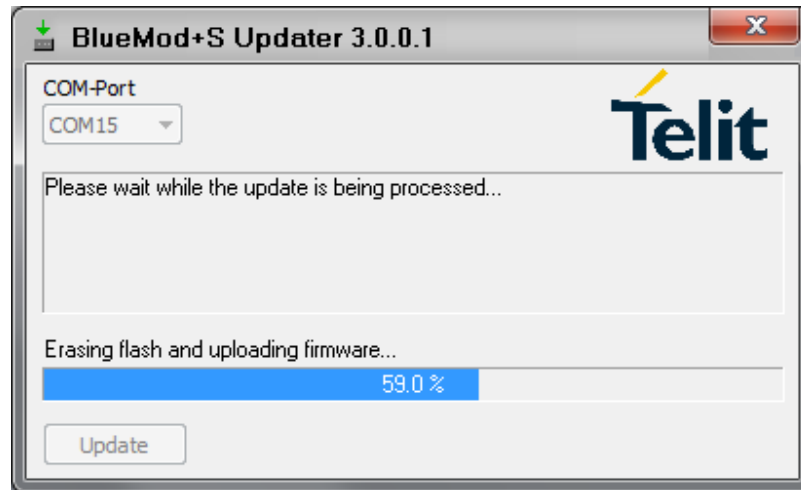
- Configure jumper J2 to position 2-3 to activate the bootloader at start-up.
- Connect the BlueEva+S/ADC to the USB port of a PC (make sure the FTDI VCP USB to UART driver is already installed). If the BlueEva+S/ADC is already connected to the PC perform a reset using the reset button.
- Start the *BM+S-ADC\_v2\_xxx\_FWupdate.exe* program.



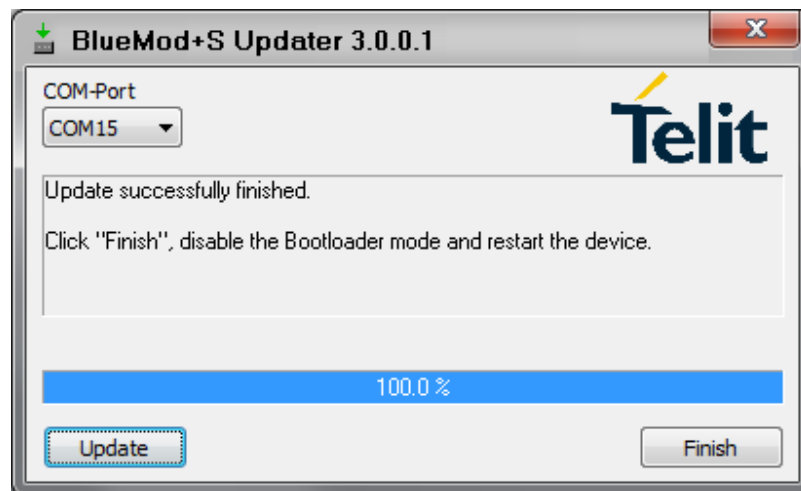
- Select the COM port the BlueEva+S/ADC is connected to and press the “Update” button.



- The firmware will be uploaded.



- After the update is completed click the “Finish” button.



- To set back the BlueEva+S/ADC into normal operation mode, move jumper J2 to position 1-2 again and perform a reset.
- Send the AT&F command to set the factory default values.



***Do not disconnect the device while the update is in progress, otherwise the update will fail and has to be repeated. In case it is not possible to update the module please contact the Telit support (e-mail: [ts-srd@telit.com](mailto:ts-srd@telit.com)).***



## 8.2. Firmware Update Over The Air (OTA)

The BlueMod+S/ADC supports firmware over the air update. The firmware update over the air can be performed by using the Nordic nRF ToolBox app available for iOS and Android or by using the Nordic Master Control Panel and the corresponding Nordic Bluetooth hardware.

The firmware over the air update in the BlueMod+S/ADC will be enabled with the AT commands below:

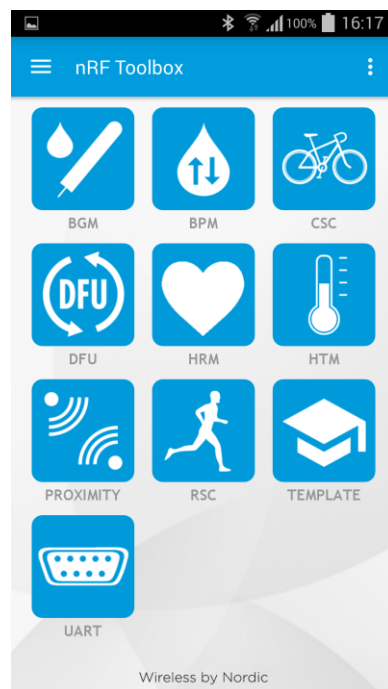
- AT+DFUMODE=2
- AT+DFUSTART

After sending the AT+DFUSTART command the BlueMod+S/ADC is visible in the air as “BM+S\_DFU” (name configured with command AT+DFUNAME) for a time period of 2 minutes. If no firmware update is performed during this time the BlueMod+S/ADC will continue with normal operation.

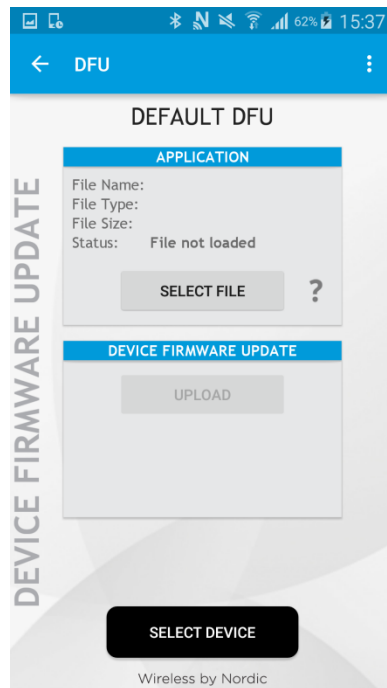
The following chapter describes the firmware over the air update by using the Nordic nRF Toolbox app on Android.

## 8.3. Firmware Update Over The Air using Nordic nRF Toolbox on Android

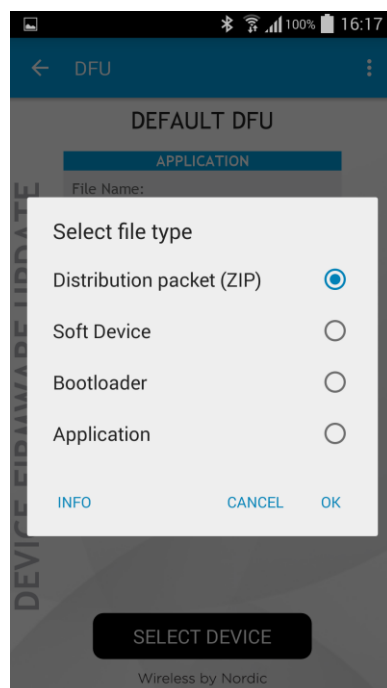
Make sure the BlueMod+S/ADC has already activated the firmware over the air update. Open the nRF ToolBox app on the smartphone and choose “DFU”.



Press the button “SELECT FILE”:

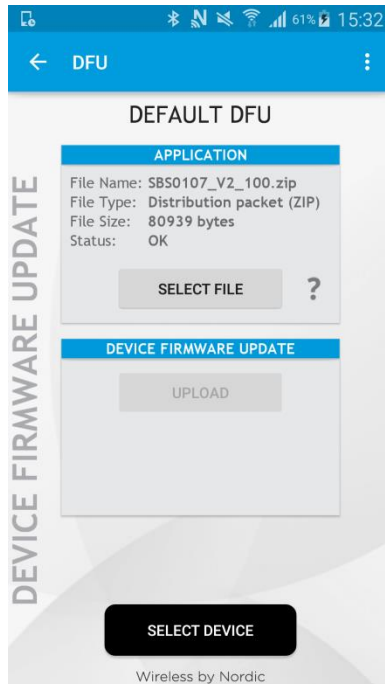


Select file type “Distribution packet (ZIP)”:

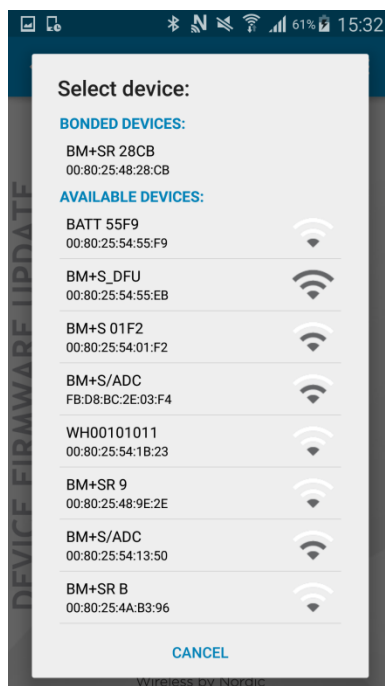


**BlueEva+S/ADC Evaluation Kit User Guide**  
1VV0301284 Rev. 04 – 2016-09-29

Search via file manager for the firmware package which was previously copied to the smartphone (e.g. SBS0107\_V2\_100.zip in the example below):

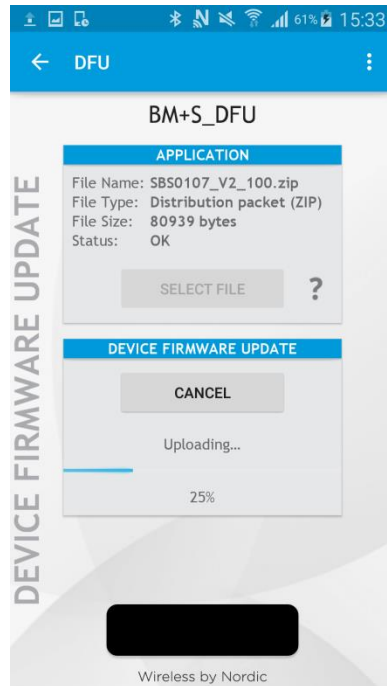


Press the button “SELECT DEVICE” and select the “BM+S\_DFU” from the list of available devices:





Press the “UPLOAD” button to upload the firmware package over the air to the BlueMod+S/ADC:



After the file was uploaded successfully the BlueMod+S/ADC will start with the new firmware.



***Do not disconnect the device while the update is in progress, otherwise the update will fail and has to be repeated. In case it is not possible to update the module please contact the Telit support (e-mail: [ts-srd@telit.com](mailto:ts-srd@telit.com)).***



## 9. Document History

Revision	Date	Changes
r01	2016-03-22	First draft
r02	2016-04-18	Added additionally ADC Utility Client information
r03	2016-05-24	Telit cover page added
r04	2016-09-29	Document converted to Telit template, Changed to BlueEva+S V3 board

